



TERM 2 2025

## Tunstall Square Kindergarten Newsletter

Welcome families to Term 2. The cold weather has truly set in now.

We are now a few weeks into the term and hope everyone had a nice break.

### IMPORTANT DATES THIS TERM

25 <sup>th</sup> April	Anzac Day (Kinder Closed)
30 <sup>th</sup> April	Mother's Day Afternoon Tea - Wallabies
6 <sup>th</sup> May	Staff Professional Day (Kinder Closed)
8 <sup>th</sup> May	Mother's Day Afternoon Tea Kookaburras
9 <sup>th</sup> May	Special Persons Day - Wombats Mother's Day Afternoon Tea
11 <sup>th</sup> May	Mother's Day.
12 <sup>th</sup> & 13 <sup>th</sup> May	Kindergarten Photographer
22 <sup>nd</sup> May	Tiddalick The Frog - Kookaburras
23 <sup>rd</sup> May	Melbourne Puppet Kerfuffle - Possums
10 <sup>th</sup> & 11 <sup>th</sup> June	Recycle Man - Wallabies & Wombats
9 <sup>th</sup> June	Kings Birthday (Kinder Closed)
18 <sup>th</sup> June	Peter and the Wolf Play - Wallabies
19 <sup>th</sup> June	Peter and the Wolf Play - Wombats
19 <sup>th</sup> & 20 <sup>th</sup> June	Reptile Encounters - Wallabies & Wombats
30 <sup>th</sup> June/July 1st	The Music Man - Kookaburras & Possums
4 <sup>th</sup> July	Last Day of Term 2

# Working Bee

Thank you to the dad's who helped with the working bee at the end of Term 1. You guys have done a great job with re laying fresh mulch, fresh sand for the sandpit, cleaning the drains, sweeping and general maintenance. We appreciate the work you do for our kinder.



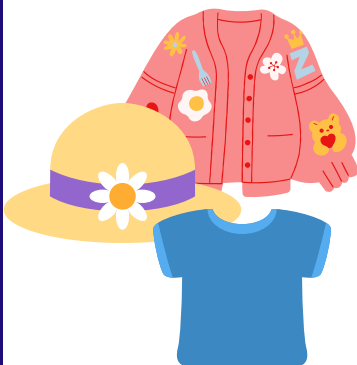
From left to right: Daniel, Rami, Rob, Daniel and Jeremy

## Winter Weather Reminder ❄️

As the colder weather sets in, please remember that we still enjoy outdoor playtime whenever possible! Make sure your child comes dressed appropriately for winter conditions—this includes warm coats.



Also, to help keep everyone healthy, we kindly ask that you keep your child at home if they are feeling unwell. Thank you for helping us create a safe and cozy environment for all!



## Lost Property is Overflowing! 🧥🧤

Our lost property collection is growing! Please take a moment to check the lost property box next time you're at the kinder. To help items find their way back home, we also ask that you clearly label all clothing and belongings.

# Foundation Enrolments Due Soon!

If your child is starting school in 2026, don't forget to submit your enrolment application for Foundation by Friday 25 July 2025. This is an important step to secure your child's place and help schools with planning for the upcoming year. For more information please view the factsheet.



## Enrolling in primary school for 2026

Starting school is an exciting time for children, parents and carers. We want to help make the enrolment process as easy as possible for you.

In Victoria, your child has the right to attend their designated neighbourhood school (your 'local school') under the Education and Training Reform Act 2006.

You can also apply for a place at a school that is not your local school. The school will consider your application in line with the Placement Policy. For more information on the Placement Policy, visit the [Enrolling in school](#) page.



### New statewide timeline for Foundation (Prep)

The first year of primary school is called Foundation or Prep. We have released the Foundation enrolment timeline for all Victorian government primary schools to follow (see page 3). The timeline aims to help you understand when and how to enrol your child into Foundation for the 2026 school year.

### When should I enrol my child in their first year of primary school?

Your child must be 5 years old by 30 April in the year that they start school.

Schooling is compulsory for children who have turned 6 years old.

To enrol your child in a Victorian government primary school for the 2026 school year, submit an enrolment application to the school by 25 July 2025.

### How do I enrol my child in their first year of primary school?

Take these steps to enrol your child in their first year of primary school:

1. Find your local school on the Find my School website (see below).
2. Contact a government primary school to book a school tour or to learn more about the school and the enrolment application process.
3. Download the Foundation (Prep) enrolment information pack from [Enrolling in Foundation \(Prep\)](#). The pack will be available by Tuesday 22 April 2025 and will include an application form. The school may also provide you with a copy of the form to complete.
4. Submit an enrolment application for Foundation by **Friday 25 July 2025**.
5. You will be notified of the outcome of your application **between Monday 28 July and Friday 8 August 2025**. If you receive an offer, you should accept the offer by **Friday 22 August 2025**.
6. Take part in enrolment information and transition sessions **during Term 4 2025**.
7. Your child will start Foundation **from Wednesday 28 January 2026**.

### How do I find my local school?

Find your local school on the Find my School website by following the steps below:

1. Enter [findmyschool.vic.gov.au](#) into your browser.
2. Enter your permanent residential address under 'Enter your address to get started'.
3. Select 2026 under 'Enrolment year'. **Note:** 2026 school zones will be available late Term 1, 2025.
4. Select Primary under 'School type'.

The map will then show your address, your local school, and on the left the contact details for the school. If you scroll down, it will also show you the five closest schools to your address.

You can also search by school name under 'Search for school'.

1



### Can my child apply to a government primary school that is not our local school?

Yes, you can apply to schools other than your local school. The school will consider your application in line with the Placement Policy and available space. You can find information on how applications are prioritised on the [Enrolling in school](#) page.

### What happens if I receive a letter saying my enrolment application was unsuccessful?

You should apply to enrol your child in another school. Your child is guaranteed a place at their local school. Your child's local school is determined on the basis of their permanent residential address. Visit [Find my School](#) to locate your child's local school. The [Enrolling in school](#) page can also help you to confirm your child's address for enrolment.

You can also appeal the decision. The [Enrolling in Foundation \(Prep\)](#) page has information on the process to appeal an enrolment application outcome.

### What happens if I miss the enrolment timeframes?

You can apply to enrol your child into Foundation for the 2026 school year at any time from Term 2, 2025.

While you are asked to submit an enrolment application by Friday 25 July 2025, applications after this date will still be accepted from those families who miss enrolment timelines, move permanent residence or newly arrive to Victoria.

Enrolment applications submitted after 25 July 2025 will be processed by the school as they are received, in accordance with the department's Placement Policy.

### Where can I find further information on enrolling in primary school?

You can ask your local primary school for further information on the Foundation enrolment process.

At the start of Term 2, 2025 you can also find an information pack on the Foundation enrolment process on the [Enrolling in Foundation \(Prep\)](#) page.

If you require help translating the information pack, please talk to your local primary school for assistance.

### Who do I contact for help?

The Transition Coordinator, Enrolment Officer or Principal of the primary school you want to apply to can help you with any questions you may have about the enrolment process.

### Useful links

Please find some useful links below that may be helpful for you as your child starts primary school:

Find my School – [findmyschool.vic.gov.au](#)

Information on school zones – [vic.gov.au/school-zones](#)

Enrolling in Foundation (Prep) – [vic.gov.au/enrolling-foundation-prep](#)

Enrolling in school – [vic.gov.au/how-choose-school-and-enrol](#)

Disability and inclusive education – [vic.gov.au/disability-and-inclusive-education](#)

Regional office contacts – [vic.gov.au/office-locations-department-education](#)

2



## Timeline for 2025-26

2025 Dates	Activity
<b>Term 2: Tuesday 22 April 2025 – Friday 4 July 2025</b>	
<b>Terms 1 and 2, 2025</b>	Primary schools conduct tours, information sessions and other activities for families seeking Foundation (Prep) enrolment for their child for 2026.
<b>By the start of Term 2, 2025</b>	School zones for the 2026 school year go live on <a href="#">findmyschool.vic.gov.au</a> . Parents and carers should go to <a href="#">findmyschool.vic.gov.au</a> to locate their designated neighbourhood school (local school) for 2026. The Enrolment Information Pack for Parents and Carers is available to download from <a href="#">Enrolling in Foundation (Prep)</a> .
<b>From Week 1, Term 2, 2025</b>	Primary schools may distribute the Enrolment Information Packs to prospective families and their local community.
<b>From Week 1, Term 2, 2025</b>	<b>Enrolment applications open</b> – parents and carers submit their completed enrolment application to a government primary school from this date.
<b>Term 3: Monday 21 July 2025 – Friday 19 September 2025</b>	
<b>By Friday 25 July 2025</b>	<b>Enrolment applications due</b> – parents and carers submit their completed enrolment application to a government primary school by this date.
<b>Between Monday 28 July and Friday 8 August 2025</b>	Primary schools notify parents and carers in writing of Foundation (Prep) enrolment outcomes, as per the department's Placement Policy. This may include a letter of offer, a letter confirming enrolment, or an unsuccessful application letter. Parents and carers sent an unsuccessful application letter may start submitting a written appeal to the primary school.
<b>By Friday 22 August 2025</b>	Parents and carers sent a letter of offer indicate acceptance of their child's place by this date.
<b>By Friday 22 August 2025</b>	<b>Closing date</b> for parents and carers to submit a written appeal to a primary school.
<b>By Friday 5 September 2025</b>	Primary schools notify all parents and carers, in writing, of the outcome of their appeal by this date.
<b>By Friday 19 September 2025</b>	<b>Closing date</b> for parents and carers to submit a written appeal with the relevant Regional Director, where they have been unsuccessful with their appeal to the primary school.
<b>Term 4: Monday 6 October 2025 – Friday 19 December 2025</b>	
<b>During Term 4, 2025</b>	Primary schools host transition sessions.
<b>By Friday 31 October 2025</b>	Regions notify all parents and carers in writing of the outcome of Regional Director appeals by this date. This only applies to appeals received by the closing date of Friday 19 September 2025.

3





# PARK ORCHARDS PRIMARY SCHOOL




## School Tours

**Tuesday & Thursday  
9:15 am**



**To book  
9876 1249**

*The future starts here...*



## Donvale Primary Prep Enrolment Information 2026

### Now is the time to book a school tour for children starting prep in 2026!

Choosing the right school for your child is one of the most important decisions you'll make, and booking a school tour is the best way to ensure the perfect fit. Every child is unique, with different learning styles, interests, and needs, so it's essential to find an environment where they will thrive. A school tour gives you the opportunity to see the facilities, meet the teachers, and get a feel for the school's culture and values. It also allows you to ask questions and picture how your child would fit into the community. Taking the time to visit schools will help you make a confident, informed decision that suits your child and your family.

Terms 1& 2	Book a tour with your local schools
Term 2	22nd April Enrolment Applications Open Submit your application to your preferred school.
Term 3	25th July Enrolment Applications Due

Book a Tour at Donvale Primary  
4 Elata Street  
Donvale 3111  
9842 3373






# MILGATE PRIMARY SCHOOL

## Foundation 2026 Program Dates



## Foundation 2026 Program Dates

**Open Day** Friday 16 May 2025  
9.15am - 10.45am

**Discovery Days** Friday 30 May 2025  
2.15pm - 3.15pm  
Friday 6 June 2025  
Book your session here



**Storytime** Friday 8 August 2025  
2.15pm - 3.15pm  
Friday 15 August 2025  
Friday 22 August 2025  
Friday 29 August 2025  
Book your session here



**Transition** 4 Weekly Sessions  
2.15pm - 3.15pm  
November dates  
to be confirmed

 96 Landscape Drive, Doncaster East  
 [www.milgateps.vic.edu.au](http://www.milgateps.vic.edu.au)  
 [www.facebook.com/milgateprimaryschool](https://www.facebook.com/milgateprimaryschool)  
 03 9842 7744